

DOLL SHIRT

Reversible



Skill



Finished Size 17x15cm / max 27cm chest

© ROAR Patterns 2020

#sewroar #roardesigns #roardolls

www.roarpatterns.com

Supplies:

35x35cm cotton fabric x2
3 SNAPS (press studs)

Equipment:

Sewing machine + thread
Scissors or rotary cutter
Pins or fabric clips
Snap pliers

Story behind the design

With a doll design underway, it felt like a perfect fit when I was asked by an Aussie charity group to design a doll shirt pattern for their use. The brief was:

- Quick to make
- Reversible both in/outside & front/back
- Fit multiple doll types and sizes
- Gender neutral style
- No hand sewing (yay)



This pattern is offered for free to use in the spirit of giving. I hope you enjoy making them so much, that you make more than you need and share the joy around.

The first ROAR doll shirt was sewn in February 2020 on the far north coast of NSW in Australia!

Find inspiration online

Search these hashtags online to find pictures of doll clothing & other ROAR patterns
#sewroar #roardesigns #roardolls #roarpatterns

Visit www.roarpatterns.com to find the full pattern range, lots of info & links to the ROAR patterns Facebook & Instagram feeds to follow.

Copyright info

The entire contents of this pattern remains the intellectual property of ROAR Patterns and must not be distributed or shared without consent from the designer.

© ROARpatterns2020

Do not photocopy or photograph any of the pattern pages (except the front cover). This is a free pattern and may not be sold in any way. Copies must be obtained from the designer, not shared amongst individuals.

You are permitted to sell small quantities of finished items sewn from this pattern. Not for mass production.

Credit is appreciated when sharing pictures online. Use one of the above hashtags.

What you need to know before you sew!

FABRIC: Quilting cotton is recommended. Thicker woven fabrics such as drill or denim can make the garment too bulky. Lighter fabrics such as poplin may not be strong enough to endure play and support the snaps.

Directional print fabrics and large prints are not recommended.

Choose a fabric with a non-directional print that has a smaller picture. E.g. checks, floral, stripes, all-over multi-directional animals, solid colours, zig zags, spots, ombre.

INTERFACING: If a fabric is used that is lighter than quilting cotton—a medium weight fusible interfacing should be added to the area under the snaps before sewing.

NO SNAPS: Buttons or hook/loop tape can be used instead. Shirt is not reversible when buttons are used. Please also consider choking hazard and difficulty doing up buttons if shirt is for use by young children.

EMBELLISH: Once the shirt fabric is cut, you can stitch on ric rac, a tiny chest pocket or any other little feature you like.

COLLAR: Choose your fabric for both sides wisely. The fabric of side B will be visible as the collar on side A.

GENERAL: Always start and end all lines of stitching by sewing back and forth 3 stitches to strengthen both ends.

Use a short stitch length of 2.5-3 on most sewing machines.

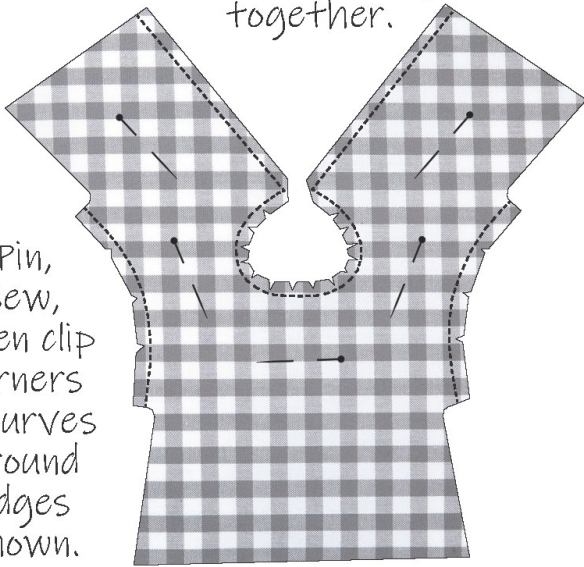
7mm seam allowance is already included in the pattern piece.



1

Place fabrics A & B right sides together.

Pin, sew, then clip corners & curves around edges shown.



2

Turn right side out.

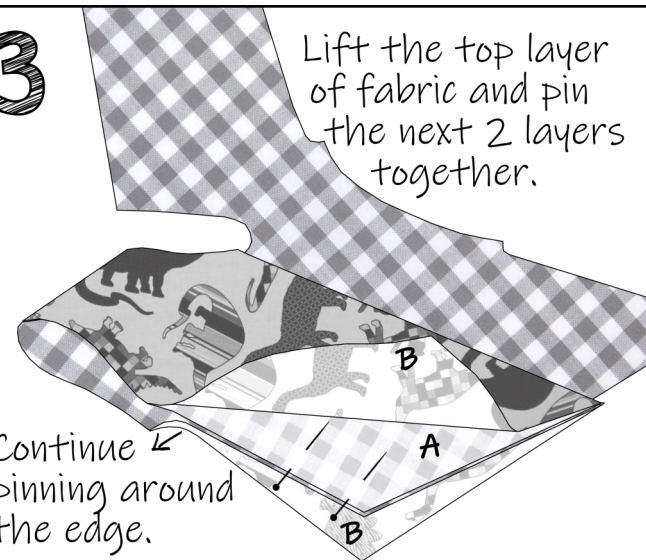
Fold one side down at the shoulder.



3

Lift the top layer of fabric and pin the next 2 layers together.

Continue pinning around the edge.

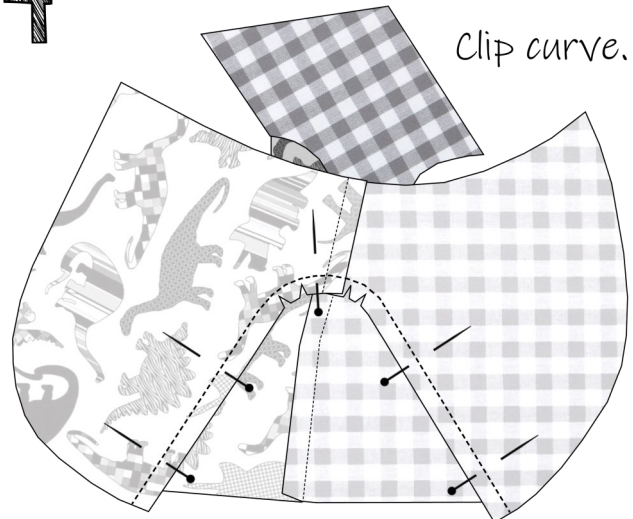


Right sides of A together & right sides of B together. Align at seam.

4

Sew around the underarm.

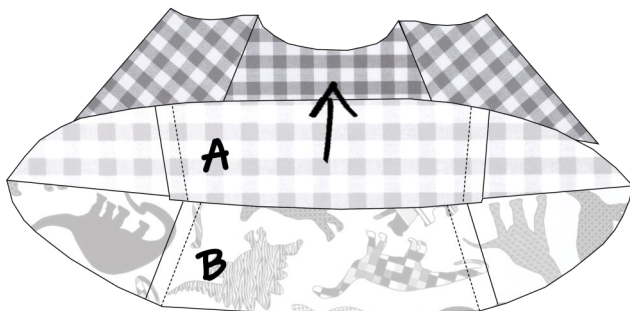
Clip curve.



Repeat steps 2-4 for the other underarm side.

5

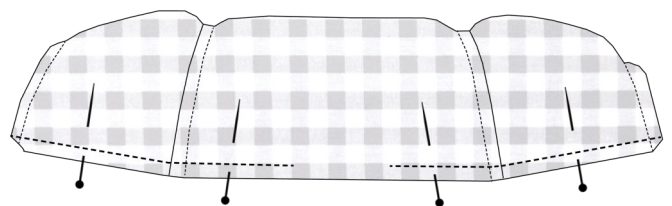
Lift the remaining raw edge along the bottom of the shirt.



Align the side A & side B bottom edges right sides together. The top of the shirt tucked inside.

6

Pin and sew leaving a 4cm turning gap in the centre.



Clip corners before turning out the right way through the gap.

7

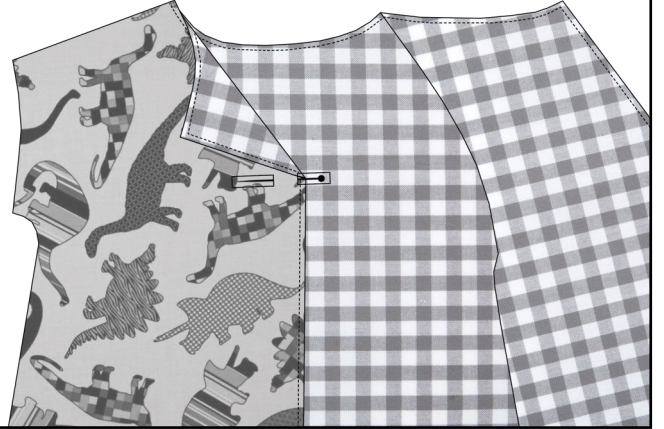
Topstitch around the shirt 4mm from the edge.



Use different colour top & bobbin threads to match each fabric.

8

Measure and pin 4cm down from the top of the neckline. Fold from pin to tip of shoulder and iron in place. Repeat on second side.



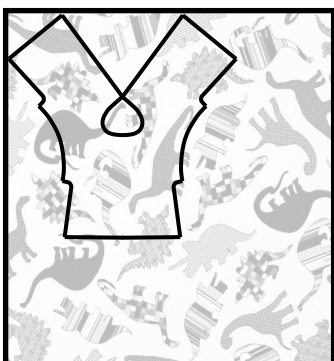
9

Measure and position snaps at 2, 5.5 & 9cm up from the bottom edge.



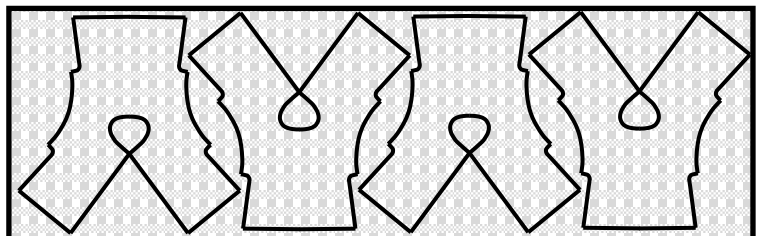
Cutting Guide

35 x 35cm is required to cut out the shirt pattern piece.



1 can be cut from a single FQ (fat quarter 48x52cm)

4 can be cut from 35cm of 112cm wide fabric off the roll.



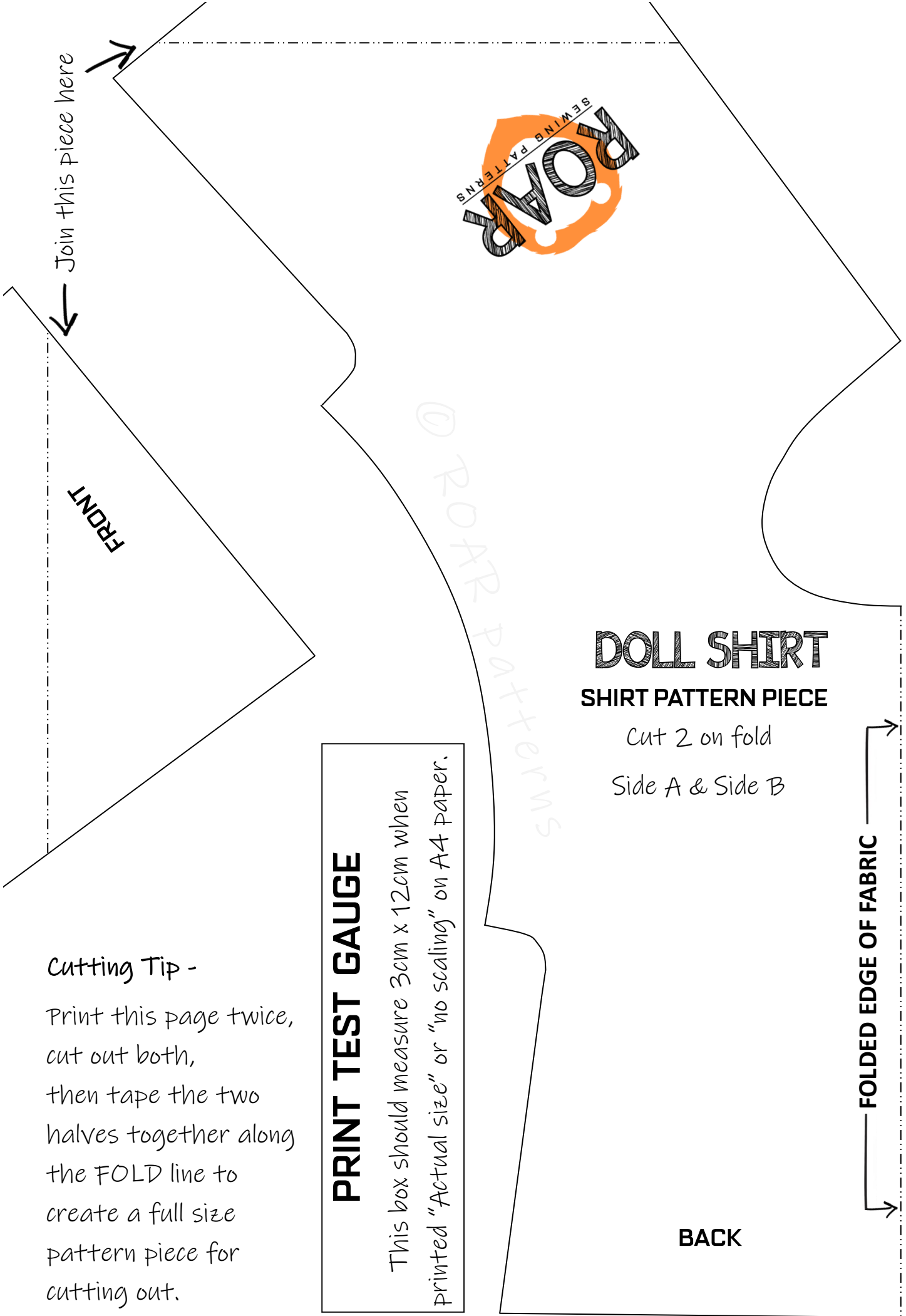


#sewroar
#roardesigns
#roarpatterns





© ROAR Patterns



Join this piece here



FRONT

DOLL SHIRT SHIRT PATTERN PIECE

Cut 2 on fold
Side A & Side B

FOLDED EDGE OF FABRIC

BACK

Cutting Tip -

Print this page twice, cut out both, then tape the two halves together along the FOLD line to create a full size pattern piece for cutting out.

PRINT TEST GAUGE

This box should measure 3cm x 12cm when printed "Actual size" or "no scaling" on A4 paper.