



**BACK**

PJ top pattern

Cut 1 - ON FOLD

© Project Kin Ltd

Straight grain

FOLD

Back Facing  
Cut 1 - ON FOLD

Straight grain  
FOLD



**FRONT**

PJ top pattern

Cut 2

© Project Kin Ltd

Straight grain

Fold lines (see tutorial)

X

X

Front facing  
Cut 2

Straight grain

1"  
Test  
Square



© Project Kin Ltd

FOLD

### Pyjama Pants Pattern

Cut 2

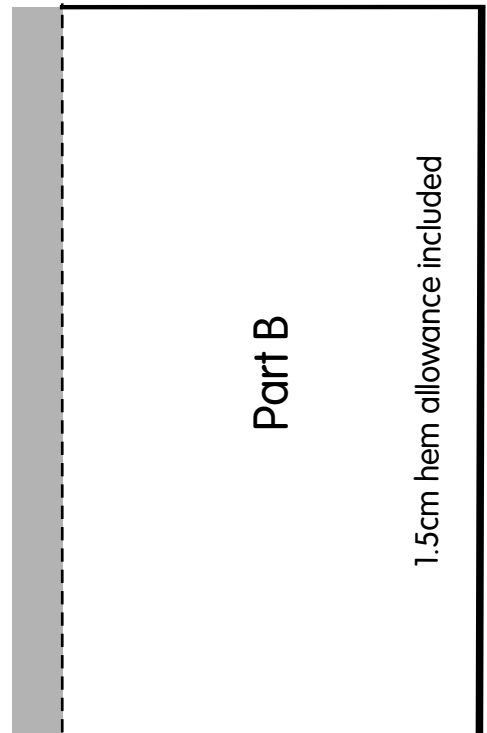
22cm elastic

Part A

#### IMPORTANT

Cut out paper pattern pieces A & B  
Including grey overlap  
Stick pattern pieces together,  
matching dotted lines

Using your paper pattern,  
cut 2 fabric pieces on fold  
Sew as for shorts pattern



1.5cm hem allowance included